

**LEADER™**

## LE1 Cash Diabetes Blood Glucose Meter and Test Strips

- Helping your patients better manage their diabetes by providing an accurate and affordable option - no prescription required
- Auto coding, reliable clinically proven accuracy, legible display, fast results in 4 seconds
- Complete, easy-to-use starter kit includes: meter, 10 test strips, control solution, 10 lancets, lancing device, clear cap (for testing on forearm and palm) carrying case and logbook



CIN	Mfr. No.	Description	Qty.
5277181	12914	Meter starter kit	1/ea
5277207	12915	Test strips	25/ct
5277272	12916	Test strips	50/ct
5277298	12917	Test strips	100/ct
5277306	12918	Control solution kit	2 mL

**LEADER™**

## TRUEtrack® Blood Glucose Test Strips

- Small 1 µL blood sample
- Easy to handle
- Covered by most insurance plans
- Affordable test strips
- TRUEcontrol® Solution for use with TRUEtrack® and TRUEbalance® systems



M

CIN	Mfr. No.	Description	Qty.
3468261	A3002-81	Test strips	50/ct
3468253	A3002-80	Test strips	100/ct
4124020	A3002-84	Test strips Medicare/Medicaid	50/ct
4005070	M5H01-83	Solution level 0	1/ea
4005104	M5H01-80	Solution level 1	1/ea

HCPCS Code: Strips A4253, Solution A4256

**LEADER™**

## TRUE METRIX® and TRUE METRIX® AIR Self Monitoring Blood Glucose Meter\* and Test Strips

- No coding
- Tiny 0.5 µL sample size
- As fast as 4 seconds
- Event tagging
- Data management and download capabilities
- Bluetooth® Smart Technology (only TRUE METRIX® AIR)
- Affordable test strips
- **CIN 5625538** prepack contains 24 boxes of Medicaid/Medicare 50 count test strips and 4 NO CHARGE meters



\*TRUE METRIX® and TRUE METRIX® AIR are intended for self-monitoring blood glucose only and not for multiple patient use. Only TRUE METRIX® PRO is intended for multiple patient use.

M

CIN	Mfr. No.	Description	Qty.
5052337	RE4002-01	Meter	1/ea
5279625	REA4002-01	Meter with Bluetooth® Smart	1/ea
5052378	R3002-050	TRUE METRIX® test strips	50/ct
5052352	R3002-0100	TRUE METRIX® test strips	100/ct
5052436	R3002-350	TRUE METRIX® test strips Medicare/Medicaid	50/ct
5625538	RE4002-77	Medicare/Medicaid NO CHARGE meter pre-pack	28/ct

HCPCS Code: Meter E0607, Strips A4253

**Abbott Diabetes Care**

## FreeStyle Precision Neo Blood Glucose Monitoring System and Test Strips

- The slim, ultra lightweight meter with over the counter test strips
- Small sample size 0.6 µL
- Fast test time 5 seconds



CIN	Mfr. No.	Description	Qty.
5057716	751755	Monitoring system	1/ea
5056494	715771	Test strips	25/ct
5056536	715795	Test strips	50/ct

**Two in three** American adults with **diabetes** report having **high blood pressure** or take prescription medications to lower their blood pressure.

Source: <http://www.diabetes.org/are-you-at-risk/lower-your-risk/bloodpressure.html>

**See blood pressure monitors on page 125–132.**

M May be reimbursable by Medicare Part B

Available through Cardinal Health Drop Ship program

HCPCS are for reference only and should be verified before billing.

Note: Products may not be available in all Cardinal Health Distribution Centers



# Get Connected

**Upgrade to  
LEADER<sup>TM</sup> TRUE METRIX<sup>®</sup> AIR\***

## Technology With Reach

With integrated wireless capability, results are seamlessly delivered to your linked mobile device\*\* to provide simple tracking and insights, empowering the user and their healthcare provider to make better decisions for a healthier life.

## Insight At Your Fingertips

With TRUE MANAGER<sup>TM</sup> AIR App, and a LEADER<sup>TM</sup> TRUE METRIX<sup>®</sup> AIR Meter and mobile device, users can track data and share with healthcare providers, friends, and family to help manage diabetes.

**TRUE MANAGER<sup>TM</sup> AIR App is available on both  
Android and iOS operating systems.**



LEADER <sup>TM</sup> Products	NDC	CIN #
<b>TRUE METRIX<sup>®</sup> AIR Self-Monitoring Blood Glucose Meter</b>	56151-1490-02	5279625
<b>TRUE METRIX<sup>®</sup> Self-Monitoring Blood Glucose Test Strips, 50 ct.</b>	56151-1460-04	5052378
<b>TRUE METRIX<sup>®</sup> Self-Monitoring Blood Glucose Test Strips, 100 ct.</b>	56151-1460-01	5052352
<b>TRUE METRIX<sup>®</sup> Self-Monitoring Blood Glucose Test Strips, Medi/Medi 50 ct.<sup>2</sup></b>	56151-1463-04	5052436

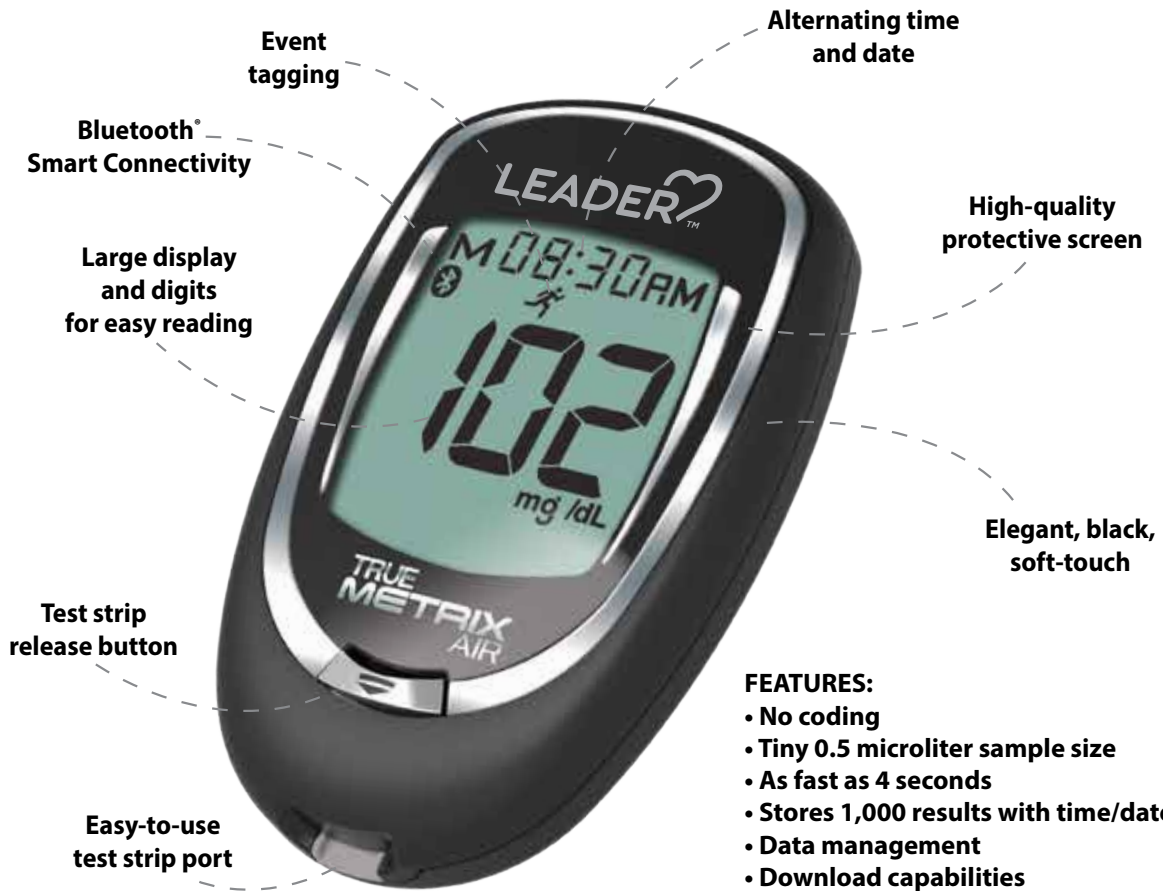
1. Cost is subject to change without notice. Final cost may vary based on wholesaler markup.  
2. Valid only for beneficiaries of Medicare or Fee for Service Medicaid (where not excluded).

**Go to Order Express to order today.**

\*TRUE METRIX AIR is intended for self-monitoring blood glucose only and not for multiple patient use. Only TRUE METRIX PRO is intended for multiple patient use. \*\*Go to [www.trividiahealth.com/truemanagerair](http://www.trividiahealth.com/truemanagerair) for a list of compatible mobile devices and applications.

**TRUE  
METRIX<sup>®</sup>  
AIR**

with  **Bluetooth<sup>®</sup>**  
SMART



**FEATURES:**

- No coding
- Tiny 0.5 microliter sample size
- As fast as 4 seconds
- Stores 1,000 results with time/date
- Data management
- Download capabilities
- Uses LEADER<sup>™</sup> TRUE METRIX<sup>®</sup> Self-Monitoring Blood Glucose Test Strips

Featuring  **TRIPLE SENSE<sup>®</sup>**  
TECHNOLOGY

**Includes Event Tagging**



**BEFORE MEAL**  
Test was taken  
just before a  
meal



**AFTER MEAL**  
Test was taken  
2 hours after the  
start of a meal



**EXERCISE**  
Test was taken  
during or after  
exercise



**SICK**  
Test was taken  
when sick



**MEDICATIONS**  
Medication  
taken may have  
affected test result



**OTHER**  
Any other  
reason the test  
is unique

# Monitors and Test Strips

## Abbott Diabetes Care

### FreeStyle Lite® Blood Glucose Monitoring System and Test Strips

- Compact and portable
- Perfect for on-the-go testing
- Small sample size 0.3 µL
- Fast test time 5 seconds



M

CIN	Mfr. No.	Description	Qty.
3986239	70805	Monitoring system	1/ea
3986247	70822	Test strips	50/ct
3985470	70827	Test strips	100/ct

HCPCS Code: Meter E0607, Strips A4253

## Ascensia Diabetes Care

### Contour® Blood Glucose Test Strips

- No Coding™ technology
- No maltose interference
- Results in 5 seconds



M

CIN	Mfr. No.	Description	Qty.
4025045	7070A	Test strips	25/ct
3536810	7080G	Test strips	50/ct
3577400	7097A	Test strips Medicare	50/ct
3536844	7090G	Test strips	100/ct

HCPCS Code: A4253

If you don't see what you're looking for... ask us about it.

This catalog contains just some of the items available through Cardinal Health. If you don't see the item you need, call **800.530.2696** and ask a **Home Healthcare Specialist** for assistance.

## Ascensia Diabetes Care

### Contour® Next Blood Glucose Meter and Test Strips

- CONTOUR®NEXT Blood Glucose Monitoring System Awarded Seal of Approval for Accuracy by the Diabetes Technology Society (DTS)
- The CONTOUR® NEXT ONE Smart Meter system and App was designed for a broad range of diabetes patients, making it an ideal connected meter because it's easy to learn and use
- The CONTOUR® NEXT ONE smartLIGHT technology gives patients instant feedback on their BG results by illuminating green, yellow or red



M

CIN	Mfr. No.	Description	Qty.
5303383	7818	Contour® Next One meter	1/kit
4798617	7377	Contour® Next meter	1/kit
4587424	7252	Contour® Next EZ meter	1/kit
4587457	7310	Contour® Next test strips	25/ct
4587465	7311	Contour® Next test strips	50/ct
4587473	7312	Contour® Next test strips	100/ct
4731303	7308	Contour® Next test strips Medicare	50/ct
5275615	7277	Contour® Next test strips cash only	35/ct
5397567	7278	Contour® Next test strips cash only	70/ct

HCPCS Code: Meter E0607, Strips A4353

## Ascensia Diabetes Care

### Ketostix® Reagent Test Strips

- Urine test strips for ketone testing



CIN	Mfr. No.	Description	Qty.
1388669	002880	Test strips	50/ct
1388677	002881	Test strips	100/ct

# Monitors and Test Strips



Dexcom, Inc.

## Dexcom G6™ Continuous Glucose Monitoring (CGM) System

- Around-the-clock monitoring – provides real-time glucose reading with as many as 288 readings per day
- No fingersticks/no scanning/no calibration
- Simple sensor insertion
- Indicated for treatment decisions in high and low ranges
- Audible alerts can proactively warn the user of approaching highs and lows
- Easy-to-read visual display of glucose trends on a smart device or the receiver—shows direction of glucose and how fast it's rising or falling

CIN	Mfr. No.	Description	Qty.
5447537	STK-OE-001	G6 receiver	1/ea
5447552	STS-OE-003	G6 sensors	3/ct
5447545	STT-OE-001	G6 transmitter	1/ea

LifeScan

## OneTouch Verio Reflect® System

- The only meter with Blood Sugar Mentor™ feature that can provide personalized insight, guidance and encouragement to help manage diabetes
- ColorSure® Dynamic Range Indicator shows when results are low, high, or in range
- Syncs data wirelessly with the OneTouch Reveal™ app



M

CIN	Mfr. No.	Description	Qty.
5604921	022657	OneTouch Verio Reflect® Monitoring System	1/ea
4541660	023927	OneTouch Verio® test strips	25/ct
4541678	022271	OneTouch Verio® test strips	50/ct
4541686	022272	OneTouch Verio® test strips	100/ct
4541710	022274	OneTouch Verio® control solution	1/ea

HCPCS Code: Meter EO607, Strips A4253

LifeScan

## OneTouch Verio Flex® Blood Glucose Monitoring System and Test Strips

- ColorSure® technology instantly shows when blood glucose results are in or out of range
- Compact, slim design
- Syncs data wirelessly with the OneTouch Reveal™ app



M

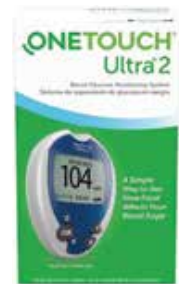
CIN	Mfr. No.	Description	Qty.
5541636	023194	OneTouch Verio Flex® Monitoring System	1/ea
4541660	022270	OneTouch Verio® test strips	25/ct
4541678	022899	OneTouch Verio® test strips	50/ct
4541686	022898	OneTouch Verio® test strips	100/ct
4541710	022274	OneTouch Verio® control solution	1/ea

HCPCS Code: Meter EO607, Strips A4253, Control solution A4256

LifeScan

## OneTouch Ultra® Blood Glucose Monitoring System and Test Strips

- Results in 5 seconds
- Requires only a tiny blood sample
- Automatically draws blood into the test strip
- Links the effect of food to blood glucose results



M

CIN	Mfr. No.	Description	Qty.
5541644	024046	OneTouch Ultra®2 Monitoring System	1/ea
3510443	020994	OneTouch Ultra® test strips	25/ct
2990166	020244	OneTouch Ultra® test strips	50/ct
2990174	020245	OneTouch Ultra® test strips	100/ct
4049557	010458	OneTouch Ultra® control solution	1/ea

HCPCS Code: Meter EO607, Strips A4253, Control solution A4256

# Monitors and Test Strips

Diabetes Care

Omnis® Health

## Embrace® TALK™ Blood Glucose Monitor and Test Strips

- For cash, high co-pay and Medicare-B patients
- SRP \$9.99 for TALK™ retail 50 ct. strips provides affordable testing with no prescription required
- TALK™ retail 50 ct. strips covered by Medicare-B, program requires **no** sign up, **no** paperwork to process, **no** waiting for rebates on higher cost products and **no** special marked boxes
- 3 **no charge** TALK™ meters and 12 TALK™ 50 ct. strips included in affordable (CIN# 5533971) Embrace® TALK™ Pre-Pack
- **Talking feature: English - Spanish**, (on-off) talks patients through testing procedure
- **Large screen with icons** assists visually impaired patients



M

CIN	Mfr. No.	Description	Qty.
5500491	APX03AB0300	Monitoring system	1/ea
5500509	APX03AB0303	Test strips	50/ct
5533971	APX03AB0300PRE	Pre-pack meter/strips	1/ea

Prodigy Diabetes Care

## Prodigy® Blood Glucose Monitoring System and Test Strips

- Prodigy AutoCode® Meter - speaks in English, Spanish, French or Arabic, stores 450 results
- Prodigy Pocket® Meter - compact, portable and easy to use, stores 120 results
- No coding required
- Download test results to free diabetes management software
- Prodigy 100 ct test strips with free meter pack includes: 100 test strips, **FREE** AutoCode® Talking meter, lancing device and 10 lancets (ideal patient starter kit)
- Prodigy meter/test strips pre-pack includes: (5) AutoCode® meters and (20) 50 ct Medicare/cash test strips



CIN	Mfr. No.	Description	Qty.
4264040	70120	AutoCode® talking meter kit	1/ea
4264057	070802-B	Pocket® meter kit	1/ea
4335733	72500	No coding test strips	50/ct
4875845	73200	No coding test strips (Medicare/cash)	50/ct
5526967	75050	100 ct test strips with meter retail pack	1/ea
4980645	75100	Prodigy meter/test strips pre-pack	1/ea

Omnis® Health

## Embrace® PRO™ Blood Glucose Monitor and Test Strips

- Approved for individual and multi-patient healthcare settings and for capillary, venous, and arterial testing and includes strip ejection feature for hygienic strip disposal
- For cash, high co-pay and Medicare-B patients
- SRP \$9.99 for PRO™ 50 ct. strips provides affordable testing with no prescription required
- PRO™ retail 50 ct. strips covered by Medicare-B, program requires **no** sign up, **no** paperwork to process, **no** waiting for rebates on higher cost products and **no** special marked boxes
- **No cost PRO™ meters are available**; please call Omnis Health at 1-877-979-5454 for information



M

CIN	Mfr. No.	Description	Qty.
4993614	ALL01AM0200	Monitoring system	1/ea
4993622	ALL02AM0202	Test strips	50/ct

HCPCS Code: Meter E0607, Strips A4253

Roche Diabetes Care

## ACCU-CHEK® Aviva Plus Test Strips

- Advanced accuracy—you can have even more confidence in the accuracy of your blood sugar results
- Easy to handle, easy to use—for people of all ages
- Fills quickly at any point along the tip with only a tiny, 0.6-microliter drop

M

CIN	Mfr. No.	Description	Qty.
4532776	06908217001	Test strips	50/ct
4532834	06908268001	Test strips	100/ct

HCPCS Code: A4253



## Roche Diabetes Care

### ACCU-CHEK® Guide Blood Glucose Monitoring System and Test Strips

- SmartPack® vial allows users to take one strip and spill none
- Wide dosing area on test strip allows users to place a small drop of blood anywhere along the end instead of on a tiny spot
- Test strip port light for testing, day or night
- Easily dispose used test strips with the push-button strip ejector
- Automatically logs results right to the free mySugr app on user's smartphone
- Delivers advanced 10/10 accuracy for reliable results<sup>1</sup>
- Contains Accu-Chek Guide blood glucose meter, Accu-Chek Softclix lancing device with 10 lancets and easy-to-use instructions (English/Spanish)



<sup>1</sup>95% of the measured glucose results shall fall within ±10 mg/dL of lab reference value for blood glucose concentrations <100 mg/dL and within 10% for blood glucose concentrations ≥100 mg/dL. Data on file.

M

CIN	Mfr. No.	Description	Qty.
5427703	08453071001	Monitoring system	1/ea
5439104	07453710001	Test strips	25/ct
5316286	07453736001	Test strips	50/ct
5439112	07453744001	Test strips	100/ct
2399715	11893238160	Softclix lancets	100/ct

HCPCS Code: Meter E0607 and Strips A4253, Lancets A4259

## Roche Diabetes Care

### ACCU-CHEK® Guide Me Blood Glucose Monitoring System

- SmartPack® vial allows users to take one strip and spill none
- Wide dosing area on test strip allows users to place a small drop of blood anywhere along the end instead of on a tiny spot
- Large, easy to read display makes it simple to see test results
- Automatically logs results right to the free mySugr app on user's smartphone
- Delivers advanced 10/10 accuracy for reliable results<sup>1</sup>
- Contains Accu-Chek Guide Me blood glucose meter, Accu-Chek Softclix lancing device with 10 lancets and easy-to-use instructions (English/Spanish)



<sup>1</sup>95% of the measured glucose results shall fall within ±10 mg/dL of lab reference value for blood glucose concentrations <100 mg/dL and within 10% for blood glucose concentrations ≥100 mg/dL. Data on file.

M

CIN	Mfr. No.	Description	Qty.
5523204	08499896001	Monitoring system	1/ea
5439104	07453710001	Test strips	25/ct
5316286	07453736001	Test strips	50/ct
5439112	07453744001	Test strips	100/ct
2399715	11893238160	Softclix lancets	100/ct

HCPCS Code: Meter E0607 and Strips A4253, Lancets A4259

M May be reimbursable by Medicare Part B

Available through Cardinal Health Drop Ship program

## Trividia Health, Inc.

### TRUE METRIX® Professional Monitoring Blood Glucose Meter\* and Test Strips

- Intended for multiple-patient use in professional healthcare settings (point of care)
- No coding
- Tiny 0.5 µL sample size
- As fast as 4 seconds
- Stores 500 results
- Test strip release
- Data management and download capability



\*TRUE METRIX® and TRUE METRIX® AIR are intended for self-monitoring blood glucose only and not for multiple patient use. Only TRUE METRIX® PRO is intended for multiple patient use.

CIN	Mfr. No.	Description	Qty.
5120282	RE4H01P-43	Meter kit	1/ea
5088505	R3H01P-450	Test strips	50/ct

## Trividia Health, Inc.

### TRUE METRIX® Self Monitoring Blood Glucose Test Strips

- Value size
- Low cost solution for cash paying patients. Patients with no insurance, high co-pay and paying cash.
- Tiny blood sample
- Easy to handle
- For use with TRUE METRIX®, TRUE METRIX® AIR and TRUE METRIX® GO Self Monitoring Blood Glucose Meters



\*TRUE METRIX®, TRUE METRIX® AIR and TRUE METRIX® GO are intended for self monitoring blood glucose only and not for multiple patient use. Only TRUE METRIX® PRO is intended for multiple patient use.

CIN	Mfr. No.	Description	Qty.
5535166	R3H01-030	Test Strips	30/ct

## Trividia Health, Inc.

### TRUEplus® Ketone Test Strips

- Reagent strips for urinalysis
- Fast, 15-second test time
- 6-level color chart, showing wide range of results for tighter monitoring



CIN	Mfr. No.	Description	Qty.
4586939	B3H01-81	Test Strips	50/ct

HCPCS are for reference only and should be verified before billing.

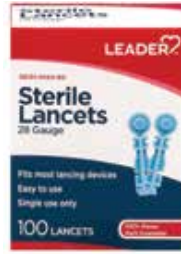
Note: Products may not be available in all Cardinal Health Distribution Centers

# Sharps – Lancing Devices and Lancets

## LEADER™

### Lancing Device and Lancets

- Comfort Zone Technology®
- Depth adjustment feature
- Regular and alternate site testing
- Single-use disposable lancets
- Lancets have a universal fit compatible with most lancing devices



M

CIN	Mfr. No.	Description	Size	Qty.
4214409	AT0270LDR	Lancing device	N/A	1/ea
5370622	S1002LB28-100	Lancets	28G	100/ct
4817912	S1002DB30-100	Lancets	30G	100/ct
4817904	S1002MC33-100	Lancets (color)	33G	100/ct

HCPCS Code: Device A4258, Lancets A4259

## Abbott Diabetes Care

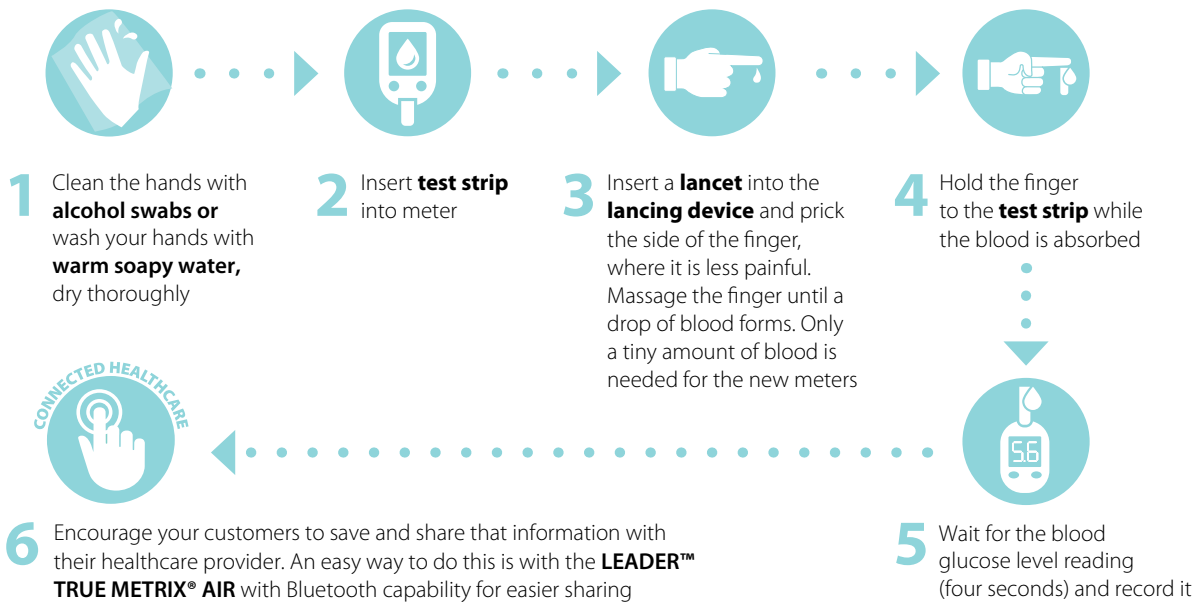
### FreeStyle Lancets

- Sterilized
- 28 gauge stainless steel for comfort
- Compatible only with Abbott lancing devices



CIN	Mfr. No.	Description	Qty.
2975670	13001	Lancets	100/ct

Are you familiar with proper testing technique?





# Sharps – Lancing Devices and Lancets

## Ascensia Diabetes Care

### Microlet® Next Lancing Device and Lancets

- Simple, smooth testing
- 5 clear depth settings
- Safety-lock end cap



M

CIN	Mfr. No.	Description	Qty.
5362595	660601	Lancing device	1/ea
4164976	6586	Color lancets	100/ct

HCPCS Code: Device A4258, Lancets A4259

## Owen Mumford

### Autolet® Advanced Lancing Device

- Comfort Zone Technology® for enhanced comfort during sampling
- Easy cap removal and lancet release
- Nine adjustable depth settings to optimize comfort and sampling needs
- Universally compatible with most lancets<sup>1</sup>
- Made in England to exacting quality standards



<sup>1</sup> Data on file. Not compatible with ACCU-CHEK® Softclix or OneTouch® Delica™

M

CIN	Mfr. No.	Description	Qty.
3672300	AT0270	Lancing device	1/ea

HCPCS Code: A4258

Diabetes Care



## LifeScan

### OneTouch® Delica® Plus Lancing Device and Lancets

- Make every test virtually pain free
- Reduced vibration for smoother lancing
- Advanced Glide® Control System is designed for comfortable testing
- Easy-to-use ergonomic design, 7 depth settings allow for personal comfort

M

CIN	Mfr. No.	Description	Qty.
5541602	023973	OneTouch® Delica® Plus lancing device	1/ea
5541628	024008	OneTouch® Delica® Plus lancets 33G	100/ct
5541610	024011	OneTouch® Delica® Plus lancets 30G	100/ct

HCPCS Code: Device A4258, Lancets A4259

## Owen Mumford

### Unilet® Lancets

- Universally compatible with most lancing devices
- Precision-sharpened for enhanced comfort
- Made in England to exacting quality standards
- Easy twist off cap



M

CIN	Mfr. No.	Description	Size	Qty.
5383534	AT0585	Micro thin	33G	100/ct
5376058	AT0565	Ultra thin	28G	100/ct

HCPCS Code: A4259

## Owen Mumford

### Unilet® ComforTouch™ Lancets

- Sterile, single-use lancets
- Precision-sharpened for enhanced comfort
- Universally compatible with most lancing devices<sup>1</sup>
- Made in England to exacting quality standards
- Recappable design for safer disposal



<sup>1</sup> Data on file. Not compatible with ACCU-CHEK® Softclix or OneTouch® Delica™

M

CIN	Mfr. No.	Description	Size	Qty.
2565596	AT0465	Super thin	30G	100/ct
2944312	AT0925	Ultra thin	28G	100/ct

HCPCS Code: A4259

M May be reimbursable by Medicare Part B

Available through Cardinal Health Drop Ship program

HCPCS are for reference only and should be verified before billing.

Note: Products may not be available in all Cardinal Health Distribution Centers

# Sharps – Lancing Devices and Lancets

Diabetes Care

## Owen Mumford

### Unistik® Travel Lancets®

- Single-use safety lancets for easy on-the-go® testing
- Comfort Zone Technology® for enhanced patient comfort
- After use, lancet automatically and permanently retracts
- Made in England for exceptional quality and performance



M

CIN	Mfr. No.	Description	Size	Qty.
4978144	AT1027	Gentle (lowest flow)	30G x 1.5 mm	50/ct
4978177	AT1022	Gentle (lowest flow)	30G x 1.5 mm	100/ct
3903978	AT1048	Comfort (low flow)	28G x 1.8 mm	25/ct
3903986	AT1047	Comfort (low flow)	28G x 1.8 mm	50/ct
3672292	AT1042	Comfort (low flow)	28G x 1.8 mm	100/ct
3903952	AT1008	Normal (medium flow)	23G x 1.8 mm	25/ct
3672284	AT1002	Normal (medium flow)	23G x 1.8 mm	100/ct

HCPCS Code: A4259

## Roche Diabetes Care

### Accu-Chek® Softclix Lancing Device and Lancets

- Simple, one-handed operation
- Precision guided technology minimizes painful side to side motion
- 11 customizable depth settings make it easier to get the right amount of blood the first time
- Thin-gauge, bevel-cut lancets help ensure smoother entry
- Contains Accu-Chek Softclix lancing device with clear cap (for testing other approved sites on the body), 10 Accu-Chek Softclix lancets and easy-to-use instructions



M

CIN	Mfr. No.	Description	Qty.
4347746	05509661001	Device	1/ea
2399715	11893238160	Lancets	100/ct

HCPCS Code: Device A4258, Lancets A4259

## Roche Diabetes Care

### ACCU-CHEK® FastClix Lancing Device and Lancets

- The only 1-click lancing device with a drum of 6 preloaded lancets
- Simple, one-handed operation
- Lancet lever makes it easy to advance to a new lancet
- Precision guided technology minimizes painful side to side motion
- 11 customizable depth settings make it easier to get the right amount of blood the first time
- Thin-gauge, bevel-cut lancets help ensure smooth entry
- Contains Accu-Chek FastClix lancing device, Accu-Chek FastClix drum (6 lancets) and easy-to-use instructions



M

CIN	Mfr. No.	Description	Qty.
4553616	05864666160	Device	1/ea
4553590	05360145001	Lancets	102/ct

HCPCS Code: Device A4258, Lancets A4259



## Trividia Health, Inc.

### TRUEplus® Safety Lancets

- Ideal for safe testing while traveling
- Designed with safety, convenience and ease-of-use in mind
- Automatic needle retraction prevents healthcare professionals and patients from accidental needlestick injury
- Pressure activated design for simplicity
- Sterile, single use
- Disposable, no need for lancing device

CIN	Mfr. No.	Description	Size	Qty.
5471594	S7H01RN28-25	Safety lancets	28G, 4mm	25/ct
5471586	S7H01RN28-100	Safety lancets	28G, 4 mm	100/ct



# LEADER<sup>TM</sup> Diabetics' Sharps

## Pen Needles

- Indicated for the subcutaneous injection of drugs; compatible with most injector devices
- Extra-thin and ultra-thin wall technology; lubrication designed for gentle injections
- Bilingual packaging

## Unifine<sup>®</sup> Pentips<sup>®</sup> Plus

- Built-in remover designed to make changing of pen needles easier, safer and more convenient<sup>1</sup>
- Universal fit with most injection pens<sup>2</sup>

## Single-Use Insulin Syringes

- Rated 10 out of 10<sup>3</sup>
- Silicone-coated, quality needles, with no burrs or surface imperfections
- Sterile, UNIBODY — one-piece needle and syringe
- Large, clear unit markings

## Lancing Device and Sterile Lancets

- Simple-to-use twist top for quick and easy testing
- Single-use disposable lancet
- Fits most lancing devices

CIN	Description	NDC
<b>LEADER<sup>TM</sup> Pen Needles</b>		
5568803	Pen Needles 33G x 5/32 in. 4mm 100 ct.	08489-8472-10
5566286	Pen Needles 32G x 5/32 in. 4mm 100 ct.	08489-8471-10
5562855	Pen Needles 31G x 3/16 in. 5mm 100 ct.	08489-8468-10
5562863	Pen Needles 31G x 1/4 in. 6mm 100 ct.	08489-8469-10
5562871	Pen Needles 31G x 5/16 in. 8mm 100 ct.	08489-8470-10
5562848	Pen Needles 29G x 1/2 in. 12mm 100 ct.	08489-8467-10
<b>LEADER<sup>TM</sup> Unifine<sup>®</sup> Pentips<sup>®</sup> Plus Pen Needles</b>		
4938494	Unifine <sup>®</sup> Pentips <sup>®</sup> Plus Pen Needles 32G x 4mm 100 ct.	08214-3840-34
4490793	Unifine <sup>®</sup> Pentips <sup>®</sup> Plus Pen Needles 31G x 5mm 100 ct.	08214-3850-34
4490819	Unifine <sup>®</sup> Pentips <sup>®</sup> Plus Pen Needles 31G x 8mm 100 ct.	08214-3830-34
<b>LEADER<sup>TM</sup> Syringes</b>		
4931903	Syringes 31G 0.3cc 100 ct.	56151-1731-01
4931929	Syringes 31G 0.5cc 100 ct.	56151-1732-01
4931952	Syringes 31G 1.0cc 100 ct.	56151-1733-01
4931788	Syringes 30G 0.3cc 100 ct.	56151-1721-01
4931812	Syringes 30G 0.5cc 100 ct.	56151-1722-01
4931846	Syringes 30G 1.0cc 100 ct.	56151-1723-01
4931713	Syringes 29G 0.5cc 100 ct.	56151-1712-01
4931739	Syringes 29G 1.0cc 100 ct.	56151-1713-01
4931614	Syringes 28G 0.5cc 100 ct.	56151-1702-01
4931697	Syringes 28G 1.0cc 100 ct.	56151-1703-01
<b>LEADER<sup>TM</sup> Lancing Device and Lancets</b>		
4214409	Autolet Lancing Device	08214-0707-34
4817904	33G Lancets 100 ct.	56151-0147-01
4817912	30G Lancets 100 ct.	56151-0144-01
5370622	28G Lancets 100 ct.	56151-0142-60

<sup>1</sup>HRW (2014) Impact of Unifine<sup>®</sup> Pentips<sup>®</sup> Plus<sup>®</sup> on pen needle changing behavior amongst people with diabetes medicating with injectable formats.

<sup>2</sup>LEADER<sup>TM</sup> data on file.

<sup>3</sup>Technically Advanced Quality Assurance Evaluation Report, conducted by UL-STR, 2013. TRUEplus<sup>TM</sup> Single-Use Insulin Syringes (28- and 31-gauge) received a top score of 10 out of 10 and were rated comparable to same-gauge syringes from BD, Monoject, and Ulticare.

# Sharps – Insulin Syringes

## LEADER™

### Single-Use Insulin Syringes

- Designed for maximum comfort, delivering quality, safety, and ease-of-use
- Large, clear unit markings
- Sterile, UNIBODY-one piece needle and syringe



M

CIN	Mfr. No.	Description	Qty.
4931952	S4002C31-100	31G x 5/16 in. 1 mL	100/ct
4931929	S4002B31-100	31G x 5/16 in. 0.5 mL	100/ct
4931903	S4002A31-100	31G x 5/16 in. 0.3 mL	100/ct
4931846	S4002C30-100	30G x 5/16 in. 1 mL	100/ct
4931812	S4002B30-100	30G x 5/16 in. 0.5 mL	100/ct
4931788	S4002A30-100	30G x 5/16 in. 0.3 mL	100/ct
4931739	S4002C29-100	29G x 1/2 in. 1 mL	100/ct
4931713	S4002B29-100	29G x 1/2 in. 0.5 mL	100/ct
4931697	S4002C28-100	28G x 1/2 in. 1 mL	100/ct
4931614	S4002B28-100	28G x 1/2 in. 0.5 mL	100/ct

HCPCS Code: A4206

Diabetes Care

## BD Diabetes Care

### BD Veo™ Insulin Syringes with BD Ultra-Fine™ 6 mm needle



- Electro-polished BD Ultra-Fine™ needle with micro-bonded lubricant for comfortable injection
- Wide flange: Feels secure in your hand for good control
- Guaranteed comfort or money back
- Covered by most health plans including, Medicare Part D

M

CIN	Mfr. No.	Description	Qty.
<b>U100 syringes</b>			
4570305	324912	31G x 6 mm 1 mL	100/ct
4570289	324911	31G x 6 mm 0.5 mL	100/ct
4569679	324909	31G x 6 mm 0.3 mL	100/ct
4570271	324910	31G x 6 mm 0.3 mL half-unit	100/ct
<b>U500 syringe</b>			
5301874	326730	31G x 6 mm 0.5 mL	100/ct

HCPCS Code: A4206



## Cardinal Health™

### Monoject Insulin Syringes

- Ultra comfort, anti-coring needle produces a consistently sharp needle for more comfortable injections
- Polypropylene barrel and plunger rod with plunger tip not made with natural rubber latex
- Graduations improve measurements on insulin draws and eliminate errors
- Clear barrel construction and bolder scale is easy to read with fewer errors

CIN	Mfr. No.	Description	Qty.
5066170	609131	31G x 5/16 in. x 1 mL	100/ct
5066139	609231	31G x 5/16 in. x 0.5 mL	100/ct
5066030	609331	31G x 5/16 in. x 0.3 mL	100/ct
5066089	609600	30G x 5/16 in. x 1 mL	100/ct
5066212	609700	30G x 5/16 in. x 0.5 mL	100/ct
5066147	609800	30G x 5/16 in. x 0.3 mL	100/ct
5066105	609358	29G x 1/2 in. x 1 mL	100/ct
5066055	609350	29G x 1/2 in. x 0.5 mL	100/ct
5067236	609145	29G x 1/2 in. x 0.3 mL	100/ct
5067244	609101	28G x 1/2 in. x 1 mL	100/ct
5066022	609004	28G x 1/2 in. x 0.5 mL	100/ct

## BD Diabetes Care

### BD Insulin Syringes with BD Ultra-Fine™ needle

- Electro-polished BD Ultra-Fine™ needle with micro-bonded lubricant for comfortable injection
- Wide flange: Feels secure in your hand for good control
- Guaranteed comfort or money back
- Covered by most health plans including , Medicare Part D

M

CIN	Mfr. No.	Description	Qty.
2561066	328418	31G x 8 mm 1 mL	100/ct
2487239	328468	31G x 8 mm 0.5 mL	100/ct
2487247	328438	31G x 8 mm 0.3 mL	100/ct
3383056	328440	31G x 8 mm 0.3 mL half-unit	100/ct
1860949	328411	30G x 12.7 mm 1 mL	100/ct
1860956	328466	30G x 12.7 mm 0.5 mL	100/ct
1860964	328431	30G x 12.7 mm 0.3 mL	100/ct

HCPCS Code: A4206

# Sharps – Insulin Syringes

Trividia Health, Inc.

## TRUEplus® Single-Use Insulin Syringes

- Delivers comparable quality, comfort and ease-of-use to the leading national brands.\*
- Affordable, quality solution to promote compliance and safety
- Sterile, UNIBOY-one piece needle and syringe
- Transparent barrel with large, legible, easy-to-read dose lines
- Available in a variety of gauges and sizes for greater comfort



CIN	Mfr. No.	Description	Qty.
4587838	S4H01C31-100	31G x 5/16 in. x 1 mL	100/ct
4587804	S4H01B31-100	31G x 5/16 in. x 0.5 mL	100/ct
4587770	S4H01A31-100	31G x 5/16 in. x 0.3 mL	100/ct
4587721	S4H01C30-100	30G x 5/16 in. x 1 mL	100/ct
4587606	S4H01B30-100	30G x 5/16 in. x 0.5 mL	100/ct
4587598	S4H01A30-100	30G x 5/16 in. x 0.3 mL	100/ct
4586913	S4H01C29-100	29G x 1/2 in. x 1 mL	100/ct
4586905	S4H01B29-100	29G x 1/2 in. x 0.5 mL	100/ct
4586764	S4H01C28-100	28G x 1/2 in. x 1 mL	100/ct
4586681	S4H01B28-100	28G x 1/2 in. x 0.5 mL	100/ct

HCPCS Code: A4206

M

\*Technically Advanced Quality Assurance Evaluation Report, conducted by UL-STR, 2013. TRUEplus® Single-Use Insulin Syringes (28- and 31-gauge) received a top score of 10 out of 10 and were rated comparable to same-gauge syringes from BD, Monoject and Ulticare.

UltiMed, Inc.

## UltiGuard® Safe Pack Insulin Syringes

- Combines 100 premium insulin syringes with a sharps container
- Not made with natural rubber latex
- Clear barrel with bold scale markings
- Tri bevel needle for easy insertion
- Covered by most health plans, including Medicare Part D



M

CIN	Mfr. No.	Description	Qty.
3722337	07419	31G x 8 mm 1 mL	100/ct
3722329	07459	31G x 8 mm 0.5 mL	100/ct
3722311	07439	31G x 8 mm 0.3 mL	100/ct
4209391	07315	30G x 12.7 mm 1 mL	100/ct
4209367	07355	30G x 12.7 mm 0.5 mL	100/ct
4209318	07335	30G x 12.7 mm 0.3 mL	100/ct

HCPCS Code: A4206

UltiMed, Inc.

## UltiCare® Insulin Syringes

- Not made with natural rubber latex
- Clear barrel with bold scale markings
- Tri bevel needle for easy insertion



CIN	Mfr. No.	Description	Qty.
3740180	09419	31G x 8 mm, 1 mL	100/ct
3740156	09459	31G x 8 mm, 0.5 mL	100/ct
3740149	09439	31G x 8 mm, 0.3 mL	100/ct
5246954	91009	31G x 6 mm, 1 mL	100/ct
5246947	91008	31G x 6 mm, 0.5 mL	100/ct
5246921	91006	31G x 6 mm, 0.3 mL	100/ct
5246939	91007	31G x 6 mm, 0.3 mL half-unit	100/ct
4534624	09315	30G x 12.7 mm, 1 mL	100/ct
4534640	09355	30G x 12.7 mm, 0.5 mL	100/ct
4534673	09335	30G x 12.7 mm, 0.3 mL	100/ct
3562303	09319	30G x 8 mm, 1 mL	100/ct
3562295	09359	30G x 8 mm, 0.5 mL	100/ct
3562287	09339	30G x 8 mm, 0.3 mL	100/ct
3562253	09219	29G x 12.7 mm, 1 mL	100/ct
3562220	09259	29G x 12.7 mm, 0.5 mL	100/ct
3562204	09239	29G x 12.7 mm, 0.3 mL	100/ct
3562170	08218	28G x 12.7 mm, 1 mL	100/ct
3562089	08258	28G x 12.7 mm, 0.5 mL	100/ct



**LEADER™**

**Pen Needles**

- Intended for use with pen injector devices for the subcutaneous injection of drugs
- Tested in conformance with ISO 11608-2
- Compatible with most pen injector devices available on the market
- Electropolished surface with thin wall and lubrication designed for gentle injection

M

CIN	Mfr. No.	Description	Qty.
<b>Pen needles</b>			
5566286	13877	32G x 4 mm	100/ct
5562871	13876	31G x 8 mm	100/ct
5562863	13875	31G x 6 mm	100/ct
5562855	13874	31G x 5 mm	100/ct
5562848	13873	29G x 12 mm	100/ct

HCPCS Code: A4215

**LEADER™**

**Unifine Pentips Plus**

- Unifine® Pentips® Plus Pen Needles
- Built-in remover designed to make changing of pen needles easier, safer and more convenient<sup>1</sup>
- Made in England for exceptional quality and performance
- Universal fit with most injection pens<sup>2</sup>



<sup>1</sup>HRW (2014) Impact of Unifine Pentips Plus on pen needle changing behavior amongst people with diabetes medicating with injectable formats.

<sup>2</sup>Data on file.

M

CIN	Mfr. No.	Description	Qty.
4938494	AN3840LDR	32G x 4 mm	100/ct
4490793	AN3850LDR	31G x 5 mm	100/ct
4490819	AN3830LDR	31G x 8 mm	100/ct

HCPCS Code: A4215

**BD Diabetes Care**

**BD AutoShield Duo™ Pen Needles**



- Single use
- Large barrel designed for easy handling and attachment
- Patented dual automatic safety shields help prevent accidental needlesticks before and after injections

M

CIN	Mfr. No.	Description	Qty.
4563987	329515	30G x 5 mm	100/ct

HCPCS Code: A4215

**BD Diabetes Care**

**BD Nano™ Ultra-Fine™ Pen Needles**



- EasyFlow™ technology - less thumb force needed to press the pen button
- PentaPoint™ comfort - Allows for a more comfortable injection
- Fits leading pen injection devices
- Covered by most health plans including, Medicare Part D
- Guaranteed comfort or money back

M

CIN	Mfr. No.	Description	Size	Qty.
5536545	320550	Nano 2nd Gen	32G x 4 mm	100/ct

HCPCS Code: A4215

**BD Diabetes Care**

**BD Ultra-Fine™ Pen Needles**



- Fits leading pen injection devices

M

CIN	Mfr. No.	Description	Size	Qty.
3335395	320119	Mini	31G x 5 mm	100/ct
5392162	320749	Micro	32G x 6 mm	100/ct
4292272	320122	Nano	32G x 4 mm	100/ct
2760312	320109	Short	31G x 8 mm	100/ct
2487213	328203	Original	29G x 12.7 mm	100/ct

HCPCS Code: A4215

Diabetes Care

M May be reimbursable by Medicare Part B

Available through Cardinal Health Drop Ship program

HCPCS are for reference only and should be verified before billing.

Note: Products may not be available in all Cardinal Health Distribution Centers

# Sharps – Pen Needles

Owen Mumford

## Unifine® Pentips® Pen Needles

- European manufactured for exceptional quality and performance
- Universal fit with most injection pens<sup>1</sup>
- Not made with natural rubber latex

<sup>1</sup> Data on file.



M

CIN	Mfr. No.	Description	Qty.
5531173	AN3560	33G x 4 mm	100/ct
4803177	AN1140	32G x 4 mm	30/ct
4803151	AN3540	32G x 4 mm	100/ct
4583282	AN1150	31G x 5 mm	30/ct
4583274	AN3550	31G x 5 mm	100/ct
4489357	AN1190	31G x 6 mm	30/ct
3381191	AN3590	31G x 6 mm	100/ct
4489340	AN1130	31G x 8 mm	30/ct
3105590	AN3530	31G x 8 mm	100/ct
3030939	AN3529	29G x 12 mm	100/ct

HCPCS Code: A4215

## Need a product immediately?

Call the **Home Healthcare Specialist** at **800.530.2696**.

A specialist will work with you to check availability, pricing, place your order and follow through on a speedy delivery.

Owen Mumford

## Unifine® Pentips® Plus Pen Needles

- Built-in remover designed to make changing of pen needles easier, safer and more convenient<sup>1</sup>
- Universal fit with most injection pens<sup>2</sup>
- Made in England for exceptional quality and performance

<sup>1</sup> HRW (2014) Impact of Unifine Pentips Plus on pen needle changing behavior amongst people with diabetes medicating with injectable formats.

<sup>2</sup> Data on file.



M

CIN	Mfr. No.	Description	Qty.
5531181	AN3860	33G x 4 mm	100/ct
4949038	AN3840	32G x 4 mm	100/ct
4777777	AN3850	31G x 5 mm	100/ct
4777785	AN3890	31G x 6 mm	100/ct
4777793	AN3830	31G x 8 mm	100/ct
4781670	AN3829	29G x 12 mm	100/ct

HCPCS Code: A4215

Owen Mumford

## Unifine® SafeControl Pen Needles

- Safety pen needle with dual needle protection
- Enhanced user control preventing premature activation
- Visual confirmation of dose-delivery
- Excellent option for care-givers or self injectors



M

CIN	Mfr. No.	Description	Qty.
5605811	AN7599	30G x 5 mm	100/ct
5605829	AN7935	30G x 8 mm	100/ct

HCPCS Code: A4215

# Diabetes Care Solutions

Unifine® pen needles offer the premium quality of UK manufacturing in a broad range of sizes at savings up to 60% versus other national brands.<sup>1</sup>



**Unifine® SafeControl®**

**Unifine® Pentips®*plus***

**Unifine® Pentips®**

Owen Mumford's capillary testing products are designed to make sampling easier, more comfortable and convenient even while On-The-Go™.



**Unistik® 3**

**Autolet®**

**Unilet®**

**Unilet®  
ComforTouch®**

<sup>1</sup>Comparison of acquisition cost of Unifine Pentips Plus versus other leading national brands. Data on file.

CARHHC2020/OMI/0820/1/US



# Sharps – Pen Needles

Trividia Health, Inc.

## TRUEplus® 3-Bevel Pen Needles

- Developed for greater comfort
- TRUEplus® Pen Needles are silicone coated for greater comfort
- Combine safety with ease-of-use providing an easy injection experience
- Sterile, single-use needles
- Compatible thread provides attachment to most pen injector devices



M

CIN	Mfr. No.	Description	Qty.
5441373	S5H01A32-100	32G x 4 mm	100/ct
5441381	S5H01B31-100	31G x 5 mm	100/ct
5441357	S5H01C31-100	31G x 6 mm	100/ct
5441365	S5H01D31-100	31G x 8 mm	100/ct
5441340	S5H01F29-100	29G x 12 mm	100/ct

HCPCS Code: A4215

Trividia Health, Inc.

## TRUEplus® 5-Bevel Pen Needles

- TRUEplus® Pen Needles are especially designed to offer a comfortable injection experience
- Feature a unique needle design to help reduce the frequency of painful injections<sup>1</sup> and increase patient acceptance<sup>2</sup>
- Combine safety with ease-of-use providing an easy injection experience
- Sterile, single-use needles
- Compatible thread that provides easy attachment on to the pen injector, compatible with a wide variety of injector pens
- Available in a wide variety of sizes to meet individual needs



<sup>1</sup> Hirsch, L, Gibney M, Berube J, and Manocchio J. "Impact of a Modified Needle Tip Geometry on Penetration Force as Well as Acceptability, Preference, and Perceived Pain in Subjects with Diabetes." *Journal of Diabetes Science and Technology*, U.S. National Library of Medicine, 1 Mar. 2012, www.ncbi.nlm.nih.gov/pubmed/22538142.

<sup>2</sup> Norman, J J, and M R Prausnitz. "Improving Patient Acceptance of Insulin Therapy by Improving Needle Design." *Journal of Diabetes Science and Technology*, U.S. National Library of Medicine, 1 Mar. 2012, www.ncbi.nlm.nih.gov/pubmed/22538143.

M

CIN	Mfr. No.	Description	Qty.
5567656	S6H01A32-100	32G x 4 mm	100/ct
5567680	S6H01B31-100	31G x 5 mm	100/ct
5567672	S6H01C31-100	31G x 6 mm	100/ct
5567664	S6H01D31-100	31G x 8 mm	100/ct
5567698	S6H01F29-100	29G x 12.7 mm	100/ct

HCPCS Code: A4215

UltiMed, Inc.

## UltiCare® Pen Needles

- Tri bevel needle for easy insertion
- Thin wall for enhanced flow rate
- Fits leading pen injection devices



CIN	Mfr. No.	Description	Size	Qty.
5246905	71007	Micro	32G x 4 mm	30/ct
4565651	09545	Micro	32G x 4 mm	50/ct
4910006	71003	Micro	32G x 4 mm	100/ct
5526892	71014	Mini	32G x 6 mm	100/ct
5526876	71013	Mini	31G x 5 mm	100/ct
5246913	71008	Mini	31G x 6 mm	30/ct
4377248	09565	Mini	31G x 6 mm	50/ct
4910022	71004	Mini	31G x 6 mm	100/ct
4377263	09585	Short	31G x 8 mm	50/ct
4910089	71005	Short	31G x 8 mm	100/ct
4910188	71006	Original	29G x 12.7 mm	100/ct

UltiMed, Inc.

## UltiGuard® Safe Pack Pen Needles

- Combines 100 premium pen needles with a sharps container
- Tri bevel needle for easy insertion
- Fits leading pen injection devices
- Thin wall for enhanced flow rate
- Covered by most health plans, including Medicare Part D



M

CIN	Mfr. No.	Description	Size	Qty.
4565644	09543	Micro	32G x 4 mm	100/ct
5526868	09553	Mini	31G x 5 mm	100/ct
3777323	09563	Mini	31G x 6 mm	100/ct
5526884	09562	Mini	32G x 6 mm	100/ct
3777398	09583	Short	31G x 8 mm	100/ct
3777414	09512	Original	29G x 12.7 mm	100/ct

HCPCS Code: A4215

# Disposal Guidelines by State for Home Generated Sharps

APRIL – 2020



Home generated sharps include hypodermic needles, syringes and lancets used to treat chronic conditions such as, diabetes, allergies, arthritis, osteoporosis, multiple sclerosis, hepatitis B and HIV. Individuals who use needles at home are responsible for ensuring proper disposal. Safe disposal helps protect workers and the public from unnecessary injury and possible infectious disease transmission. **Contact your medical provider, pharmacy, fire station, household hazardous waste facility, or community health center to determine if disposal options are available in your local area.**

Guidelines for States NOT Permitting Sharps Disposal in Household Garbage	
California, Massachusetts, Oregon, Wisconsin	Legally prohibit disposing of sharps waste in trash or recycling containers and require all sharps be transported to a collection center in an approved sharps container. If you do not have access to a sharps container & live in MA or WI you may place sharps in a puncture resistant container for transport. Local collection centers may include pharmacies, hospitals, and household hazardous waste facilities. Additional options may include a mail-back, syringe exchange, medical waste collection or sharps needle destruction device to destroy used needles & lancets. <b>California</b> — San Luis Obispo, Alameda, Santa Clara, Santa Cruz, Sonoma counties offer additional free services such as local disposal kiosks and take-back events.
Washington	<b>Seattle/Parts of King County</b> — legally prohibit disposing of sharps in trash or recycling containers. For more information, call King County Health Department, (206) 263-8899.

Guidelines for States Permitting Sharps Disposal in Household Garbage	
Alaska, Arizona, Colorado, Florida, Illinois, Indiana, Iowa, Kansas, Kentucky, Maine, Maryland, Michigan, Minnesota, Missouri, Mississippi, Nebraska, Nevada, New Hampshire, North Carolina, North Dakota, Ohio, Oklahoma, Rhode Island, Tennessee, Texas, Utah, Vermont, Virginia, Washington, Wyoming	Recommended disposal solutions may include: <ul style="list-style-type: none"> <li>Place sharps in a commercially available sharps container or a puncture resistant plastic or metal container with a tightly secured screw-on lid. Do not use a clear or glass container.</li> <li>Label container with SHARPS/DO NOT RECYCLE.</li> <li>Seal the container with heavy-duty tape.</li> <li>Place sealed container in TRASH container (not recycling).</li> </ul> Additional options include a mail-back program (fees apply), syringe exchange program, medical waste collection program, or sharps needle destruction device to destroy used needles (free to Maine residents). <b>Mississippi</b> — local drop-off programs are free. <b>Washington</b> — excludes Seattle and part of King County.

Follow Guidelines Above and Additional Requirements Below for the Following States:	
Alabama, Arkansas, Connecticut, District of Columbia, Pennsylvania, South Dakota, West Virginia	<ul style="list-style-type: none"> <li>Disinfect sharps using a 1:10 bleach and water solution. Soak contents for at least 20 minutes &amp; drain.</li> <li>District of Columbia- label container "BIOHAZARD/DO NOT RECYCLE" in RED marker.</li> </ul>
Delaware, Georgia, Hawaii, Idaho, Montana, New Mexico, South Carolina	<ul style="list-style-type: none"> <li>Add bleach to disinfect the needles (Montana and New Mexico only).</li> <li>Label container "BIOHAZARD" (Georgia and Hawaii only).</li> <li>Double bag and place into the regular trash (Delaware only).</li> <li>Fill with sand or cat litter prior to sealing (Idaho only).</li> <li>Place warning stickers on container (South Carolina only – call 1.800.285.5257 for free stickers).</li> </ul>
Louisiana	Sharps must either be encased in plaster or in another substance as approved by the State Health Officer or placed in a sharps container of standard manufacture or other similar container of a type approved by the State Health Officer. The waste must be packaged to assure that there will be no leakage, even if the original package is violated (generally, this means double bagging, or placing sharps containers in a second rigid disposal container). This packaged sharps container may be placed in TRASH (not recycling). Additional options may include a mail-back program (fees apply), a syringe exchange program, a medical waste collection program, or a sharps needle destruction device to destroy used needles & lancets.
New Jersey	New Jersey state law requires destroying needles and syringes prior to disposal. Follow the below guidelines: <ul style="list-style-type: none"> <li>Use a needle clipper purchased at the pharmacy to clip the needle.</li> <li>Carefully place each of the used needles in a commercially available sharps container or a puncture resistant plastic or metal container with a tightly secured screw-on lid. Do not use a clear or glass container.</li> <li>Label container with SHARPS/DO NOT RECYCLE.</li> <li>Seal the container tightly with its original lid and heavy-duty tape.</li> <li>Place sealed container in TRASH container (not recycling).</li> </ul> Residents may also participate in a safe syringe disposal program through their local hospital. Participating hospitals offer rigid containers to dispose of these items for a fee and do not require needles to be clipped prior to placing them in the container. The container must be returned to the hospital when full for proper disposal and will be exchanged for a new empty container.
New York	New York state law allows disposal of home generated sharps in the regular trash; however, local laws may prohibit. Hospital and nursing homes are required by law to accept properly contained sharps. Local healthcare providers may also accept sharps for disposal. For proper containment, follow the below guidelines: <ul style="list-style-type: none"> <li>Place sharps in a commercially available sharps container or a puncture resistant plastic or metal container with a tightly secured screw-on lid. Do not use a clear or glass container.</li> <li>Label container with CONTAINS SHARPS with waterproof marker directly on the container.</li> <li>Seal the container with heavy-duty tape.</li> <li>Place sealed container in TRASH container (not recycling).</li> </ul>

See reverse for links to additional information by state.

# Storage and Organizers – Insulin



3461068

**Medicool**

**Dia-Pak® Insulin Organizer Cases**

- Organizer case with refreezable gel packs
- Holds everything all in one place
- Durable nylon construction
- Refreezable gel pack keeps insulin cool for hours



3461076

CIN	Mfr. No.	Description	Qty.
3461068	DPC	Classic organizer	1/ea
3461076	DPDM	DayMate organizer	1/ea
3461050	DPDP	Deluxe organizer	1/ea



**Medicool**

**Daily Diabetic Organizer**

- Keeps insulin cool while in a hot climate
- Holds all other supplies in one secure compact place
- Refreezable gel pack keeps insulin cool for up to 10 hours
- Size 7½ x 5½ x 1¾ in.
- Carries several days supplies

CIN	Mfr. No.	Description	Color	Qty.
4569224	66000	Organizer travel	Black	1/ea

**Medicool**

**Insulin Protector**

- Keeps insulin cool while in a hot climate
- Keeps medication cool for up to 16 hours
- Includes two freezable cooling trays
- Includes pockets for additional supplies



CIN	Mfr. No.	Description	Color	Qty.
1645084	IPBLK	Insulin protector	Black	1/ea



**Medicool**

**Pen Plus Case™**

- Designed to hold two pen delivery systems or four insulin bottles
- Keeps medication refrigerated for up to 12 hours with included reusable cold packs
- Carry on a belt loop or with the hand strap

CIN	Mfr. No.	Description	Size	Qty.
3970068	PP+	Pen case	8 x 4.5 x 2.5 in.	1/ea

**Medicool cases** are used to keep Insulin and many other temperature sensitive medications refrigerated while in a hot climate.

**LEADER™**

**Sterile Alcohol Swabs**

- Antiseptic for preparation of skin prior to injection
- Not made with natural rubber latex
- Extra thick, individually wrapped packets



CIN	Mfr. No.	Description	Qty.
5216387	15578	Alcohol swabs	100/ct

**BD Diabetes Care**

**BD Alcohol Swabs**

- Thicker and softer
- Individually-wrapped



CIN	Mfr. No.	Description	Qty.
1237551	326895	Alcohol swabs	100/ct

**BD Diabetes Care**

**BD Home Sharps Container**

- Disposal for syringes, pen needles and lancets
- Puncture-resistant
- By-mail container includes pre-addressed postage and paid mail-back box



CIN	Mfr. No.	Description	Size	Qty.
2295285	323487	Container	1.4 qt.	1/ea
3503067	323488	Container by mail	1.4 qt.	1/ea

**BD Diabetes Care**

**BD Safe-Clip™ Needle Clipping and Storage Device**

- Convenient portable storage
- Holds 1,500 needles



CIN	Mfr. No.	Description	Qty.
1153790	328235	Storage device	1/ea

**Dynarex**

**Dynarex Alcohol Prep Pads**

- Alcohol prep pads saturated with 70% isopropyl alcohol
- Soft and absorbent, non-woven pads



CIN	Mfr. No.	Description	Qty.
4728564	1114	Sterile medium	100/ct
4601951	1116	Sterile large	100/ct

**UltiMed, Inc.**

**UltiCare Alcohol Swabs**

- Antiseptic for preparation of skin prior to injection
- Saturated with 70% Isopropyl Alcohol for optimum cleansing action
- Four-layer foil wrapper provides airtight seal to prevent leakage and drying out



CIN	Mfr. No.	Description	Qty.
5106281	44000	Alcohol swabs	100/ct
5106315	44001	Alcohol swabs	200/ct

**M** May be reimbursable by Medicare Part B

Available through Cardinal Health Drop Ship program

*HCPCS are for reference only and should be verified before billing.*

*Note: Products may not be available in all Cardinal Health Distribution Centers*

# Supplements and Health Products – Glucose

**LEADER™**

**Glucose Gummies**

- Great-tasting, fruit flavored way to raise blood sugar levels and boost energy
- 2 grams of carbohydrates per gummy
- Soft and easy to chew
- Caffeine, fat, sodium, GMO, gluten, gelatin and artificial preservative free
- Suitable for vegetarians
- Each pack contains over 14 grams of carbohydrates



CIN	Mfr. No.	Description	Qty.
<b>5420864</b>	9061-06	Assorted Natural Fruit Flavors	60/ct

**Akorn Consumer Health**

**Diabetic Tussin® Liquid**

- Specially formulated for people with diabetes
- 100% sugar- and alcohol-free
- Relieves coughs and soothes throat irritation



CIN	Mfr. No.	Description	Size	Qty.
<b>5645411</b>	6304	Chest congestion	4 oz.	1/ea
<b>5645395</b>	006404	Cough & chest congestion DM max	4 oz.	1/ea
<b>5645437</b>	6408	Cough & chest congestion DM	8 oz.	1/ea
<b>5645429</b>	062047	Cough suppressant DM	4 oz.	1/ea
<b>5645403</b>	45204	Nighttime cold & flu	4 oz.	1/ea

**LEADER™**

**Glucose Tablets**

- Each contain 4 grams of pre-measured, fast-acting carbohydrates and come in convenient sizes to fit individual needs
- Raises low blood sugar and boosts energy
- Economic 50-count bottle, ideal for use at home
- Convenient 10-count tube, ideal for taking on-the-go
- Available in great-tasting, popular flavors



CIN	Mfr. No.	Flavor	Qty.
<b>5425079</b>	P1002RS-50	Raspberry	50/ct
<b>5425087</b>	P1002RS-10	Raspberry, ideal for on-the-go	6 x 10/ct
<b>5425095</b>	P1002RN-50	Orange	50/ct
<b>5425103</b>	P1002RN-10	Orange, ideal for on-the-go	6 x 10/ct

**Akorn Consumer Health**


**Multi-betic® MultiVitamins**

- Specially formulated for people with diabetes
- Includes higher potencies of important nutrients essential for diabetics
- Helps maintain healthy blood sugar levels, support normal vision and macular health and promotes nerve health and function



CIN	Mfr. No.	Description	Qty.
<b>3338456</b>	081060	Vitamins	60/ct

**M** May be reimbursable by Medicare Part B

 Available through Cardinal Health Drop Ship program

*HCPCS are for reference only and should be verified before billing.*

*Note: Products may not be available in all Cardinal Health Distribution Centers*

# Skin Care/Socks – Diabetic

Diabetes Care

Sanofi CHC/Chattem

## Gold Bond® Diabetics' Dry Skin Relief

- Specifically formulated for diabetics' dry skin
- Ideal for all over body use with 24 hour moisturization
- Non-greasy, absorbs quickly
- Dermatologist tested, hypoallergenic and fragrance free



CIN	Mfr. No.	Description	Size	Qty.
4738910	05350	Lotion	13 oz.	1/ea

Sanofi CHC/Chattem

## Gold Bond® Diabetics' Foot Cream

- Specifically formulated for diabetics' dry skin
- Ideal for dry, cracked feet and heels with 24 hour moisturization
- Non-greasy, absorbs quickly and does not contain harsh alpha hydroxy acids
- Dermatologist tested, hypoallergenic and fragrance free



CIN	Mfr. No.	Description	Size	Qty.
4738894	05400	Foot cream	3.4 oz	1/ea

Sanofi CHC/Chattem

## Gold Bond® Diabetics' Hand Cream

- Specifically formulated for diabetics' dry skin
- Ideal for use on hands with 24 hour moisturization
- Non-greasy, absorbs quickly and does not contain harsh alpha hydroxy acids
- Dermatologist tested, hypoallergenic and fragrance free



CIN	Mfr. No.	Description	Size	Qty.
4979787	05360	Hand cream	2.4 oz.	1/ea

Topical BioMedics, Inc.

## Topricin® Pain Relief Cream

- Alternative for people who cannot tolerate prescription and non-prescription oral pain medication
- Supports the body's natural processes that work to heal the cells that cause the pain
- Will not interfere with any medication
- Non-greasy, non-staining
- Free of petroleum, mineral oil, lanolin, capsaicin, menthol and parabens
- No odor or fragrance



CIN	Mfr. No.	Description	Size	Qty.
4971818	3/4TOP	Cream	0.75 oz.	1/ea
4476313	20CTS	Cream	2 oz.	1/ea
4476354	308008	Cream Bottle	8 oz.	1/ea
4476404	360020	Foot Therapy Cream	2 oz.	1/ea
4857900	TFT4	Foot Therapy Cream	4 oz.	1/ea
4857926	TFT8	Foot Therapy Cream Bottle	8 oz.	1/ea

LEADER™

## Diabetic Socks

- Comfort fit—relaxed top
- Moisture wicking
- Seamless toe
- Approved by the American Podiatric Medical Association



CIN	Mfr. No.	Description	Color	Size	Qty.
4517108	12114	Crew	White	Medium	1/pr
4378188	12058	Crew	White	Large	1/pr
4378303	12060	Crew	White	Large	3/pr
4517116	12115	Crew	Black	Medium	1/pr
4378287	12059	Crew	Black	Large	1/pr
4378105	12056	Crew	Black	Large	3/pr
4517066	12112	Ankle	Black	Medium	1/pr
4517090	12113	Ankle	Black	Large	1/pr
4378147	12057	Ankle	White	Medium	1/pr
4378097	12055	Ankle	White	Large	1/pr